



Ideal for livestock weighing and herd management!

The Chute Weigh system is ideally suited for conversion of a manual or hydraulic livestock squeeze chute into a working livestock scale.

The ease of installation and setup, allows the system to be accurately weighing in just minutes. Installation can be portable or permanent depending on specific application.

FEATURES & BENEFITS

Wide range of capacities – 3500 lb (1700 kg) 5,000 lb (2500 kg) or 10,000 lb (5000 kg) gross weighing capacity.

Low profile – Less than 3.50 in (8.89 cm) high.

Heavy-duty construction – Super heavy-duty steel chassis construction.

Easy mounting – Mounting under manual or hydraulic livestock squeeze chutes.

Weigh Bar cables – Tough polyurethane weigh bar cables.

Weatherproof construction – Aerospace-developed sealing agent provides ultimate protection against moisture and ensures long term durability in harsh agricultural environment.

Herd management – Weight indicator is compatible with various herd management EID software packages.

OPTIONS

Choice of Avery Weigh-Tronix Indicators:

640M/XL – The 640M and 640XL indicators provide simple yet accurate and reliable livestock weighing with AUTO-LOC and accumulation functions.

M915A – The Model 915A makes the chore of weighing livestock quicker and easier. Additional features include

Chute Weigh

Livestock Weighing System

TECHNICAL SPECIFICATION



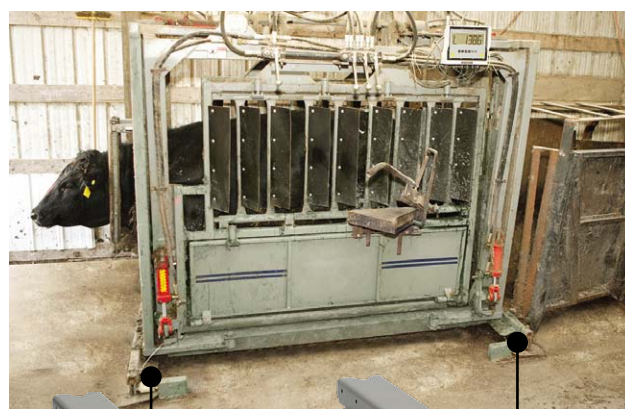
M640XL



M640



M915A



Typical Installation



statistical functions, 1000 weighment memory and auto weight recording.

Power cable – 12 VDC power cable for external battery.

Transformer – 115VAC wall mount transformer.

Chute Weigh Livestock Floor Scale

SPECIFICATIONS

Capacity:

CW-10: 10,000 lb (4536 kg) per set.
5000 lb (2268 kg) each Weigh Bar.

CW-5: 5000 lb (2268 kg) capacity per set.
2500 lb (1134 kg) each Weigh Bar.

CW-3.5: 3500 lb (1588 kg) capacity per set.
1750 lb (794 kg) each Weigh Bar.

Material: Alloy Steel Weigh Bars

Finish: Gray baked-on powder paint

Accuracy: ± 0.25%

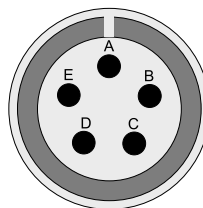
System Output: 0.38 mV/V @ 5,000 lb (2268 kg) for each system of 2 Weigh Bars.

Input Resistance: 350 ohms ± 20 ohms

Zero Balance: ± 0.5 mV/V

Cable Length: 20 ft (610 cm) with standard Avery Weigh-Tronix 5-pin cable

5 Pin Connector Color Code:



- B Green . . . +Excitation
- D Black . . . -Excitation
- C White . . . +Signal
- A Red . . . -Signal
- E Orange . . . Shield

Shipping Weight:

CW-3.5: 24 lb (11 kg) for each Weigh Bar unit

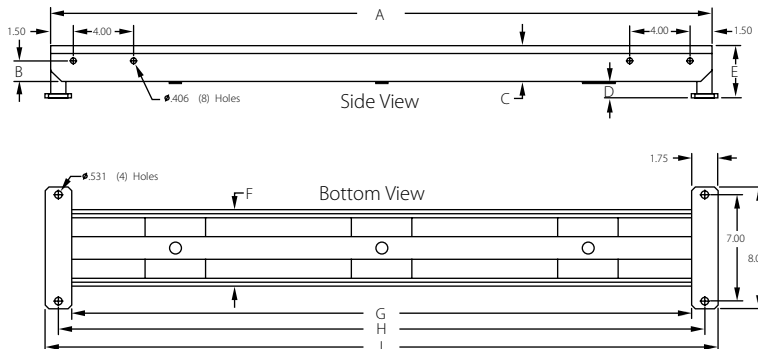
CW-5: 32 lb (14.5 kg) for each Weigh Bar unit

CW-10: 61 lb (28 kg) for each Weigh Bar unit

Warranty: Three years

Dimensions*:

| | CW-10 | | CW-5 | | CW-3.5 | |
|----------|-------|--------|-------|-------|--------|-------|
| | in | cm | in | cm | in | cm |
| A | 44.00 | 111.76 | 32.75 | 83.19 | 24.00 | 60.96 |
| B | 1.38 | 3.50 | 1.06 | 2.69 | 1.06 | 2.69 |
| C | 2.38 | 6.05 | 2.06 | 5.23 | 2.06 | 5.23 |
| D | 0.97 | 2.46 | 0.80 | 2.03 | 0.80 | 2.03 |
| E | 3.44 | 8.73 | 2.87 | 7.29 | 2.87 | 7.29 |
| F | 5.00 | 12.70 | 4.25 | 10.79 | 4.25 | 10.79 |
| G | 41.25 | 104.77 | 24.25 | 61.59 | 16.25 | 41.27 |
| H | 43.00 | 109.22 | 26.00 | 66.04 | 18.00 | 45.72 |
| I | 44.75 | 113.66 | 27.75 | 70.48 | 19.75 | 50.16 |



*Dimensions are listed for one Weigh Bar unit. A system requires two Weigh Bars.

AVERY WEIGH-TRONIX

1000 Armstrong Drive,
Fairmont, MN 56031-1439 USA
usinfo@awtxglobal.com

Toll-Free: (800) 533-0456

Phone: (507) 238-4461

Email: ag@awtxglobal.com

www.ag scales.com

Avery Weigh-Tronix

Scales for Agribusiness



© Avery Weigh-Tronix group of companies 2011. All rights reserved. Avery Weigh-Tronix is a registered trademark of the Avery Weigh-Tronix group of companies. This publication is issued to provide outline information only which, unless agreed by an Avery Weigh-Tronix group company in writing, may not be regarded as a representation relating to the products or services concerned. This publication was correct at the time of going to print however, Avery Weigh-Tronix reserves the right to alter without notice the specification, design, price or conditions of supply of any product or service at any time.

Weigh Bar® is a registered trademark of Avery Weigh-Tronix, LLC.